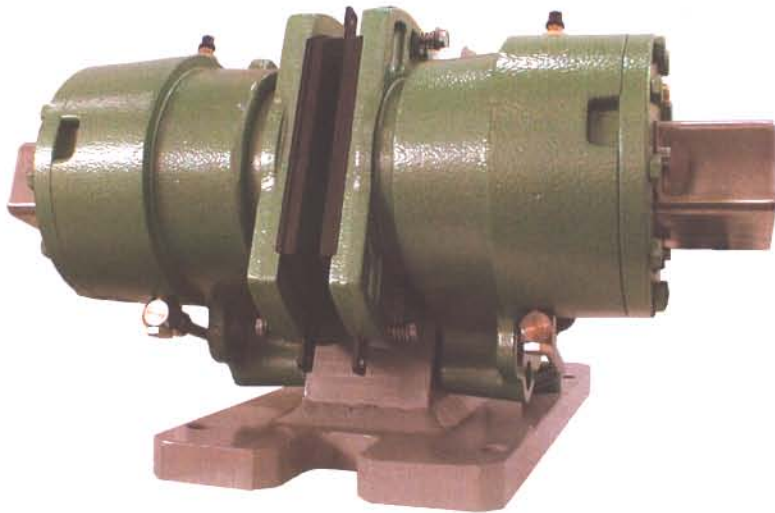


SH5 emergency caliper



Belt conveyors



Portcranes



Cableways

The SH5/SHC5 spring applied hydraulic disc brake is an emergency caliper adapted to handling equipments such as cranes or conveyors, operating in severe conditions.

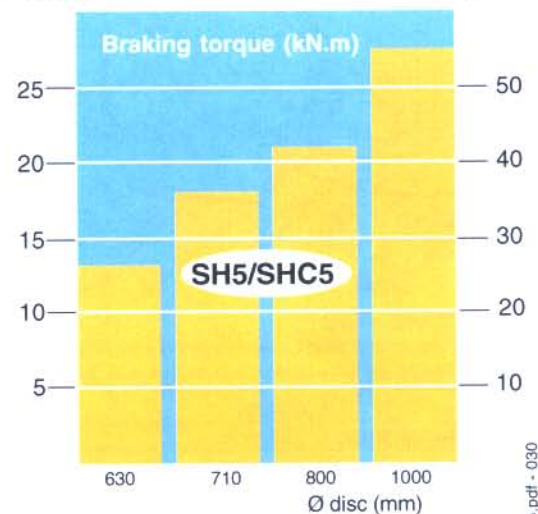
The SH5/SHC5 caliper design -powerful and compact- is adapted to:

- **Conveyors** : the SHC5 caliper is a great solution for braking of middle size declining conveyors; optional CRD® system provides for regulated braking.
- **People transport** : ski lifts and cableways require safe and compact braking solution; the SH5 is an ideal choice !

Many other applications need safe emergency brakes: consult us !...

1 caliper

2 calipers



Main characteristics:

- Hydraulic caliper
- **Direct acting** caliper / few components
- **Pivoting shoes** / Constant braking radius
- **Direct acting opening proving switch**
- **Independent stroke setting** for each half caliper
- **Low force loss** per additional air gap mm.
- **Compact** design
- Caliper **protected from dust and marine environment**
- SHC5 includes integral **hydraulic power pack**
- **Option: WACS(*) -Wear Adjustment Centering System**

(*) Patent pending

Advantages:

- Powerful braking
- Reliability / low maintenance costs
- Linings wear evenly
- No on-site setting
- Easier matching and on-site setting
- Safer operation
- Easy to install
- Longer life span
- Cost and time saving installation
- Constant torque over lining life, reduced costs

Disc brake

Technical data and dimensions

Caliper SH5

Emergency brake
Fail safe
Spring application
Hydraulic release
Opening proving switch

Operating conditions:

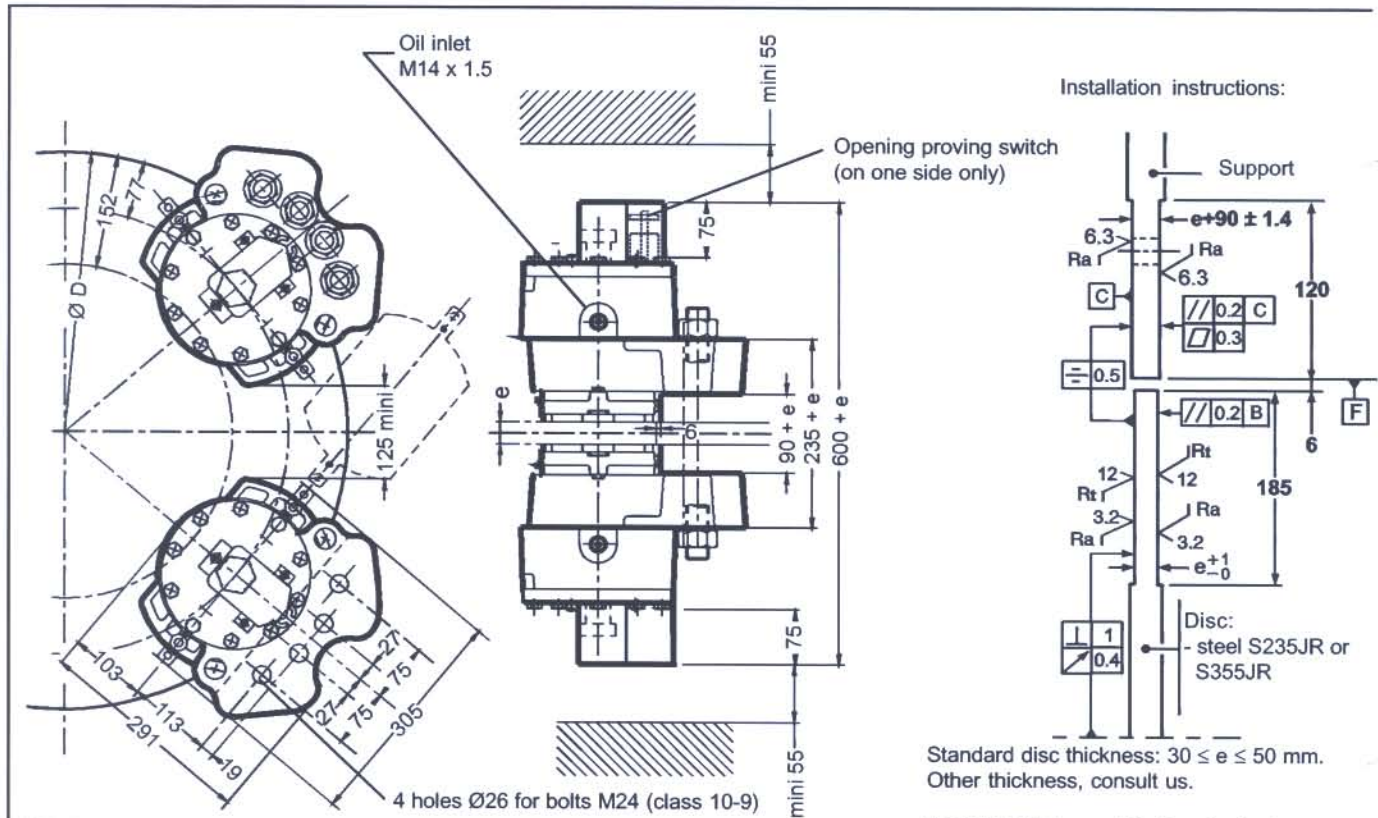
- Ambient temperature: -10°C to +60°C
- Relative humidity: ≤ 70%
- Dust in atmosphere ≥ 65μ
- Other conditions: consult us.

Use:

- The brake should be applied only in case of emergency stop, overspeed or shutdown of electric mains.
- Other use, consult us.

Options:

- Lining wear detector
- Automatic lining wear compensation (WACS)
- Lining wear control switch
- Progressive braking system
- Switch for P.L.C.
- Marine protection
- Caliper on support with integral hydraulic power unit
- Braking force factory scaled to [BF-10%]



Weight: 110kg
Torque and effort values are subject to a variation of ±10%
Response time at nominal torque ≤ 0.3s

IMPORTANT: consult before designing support

Designation	Caliper		SH5-6	SH5-5	SH5-4	SH5-3	SH5-2	SH5-1	
	Lining *		EF31						EF31
Braking force BF for 1mm of air gap disc/lining	Static N		55 200	45 000	33 100	18 500	8 500	-	
	Dynamic N		65 000	53 000	39 000	22 000	10 000	-	
Linear speed of the disc **	m/s		≤ 50						≤ 50
Dynamic braking torque BT (N.m) for 1 caliper and disc ØD (mm)	630 mm		15 500	12 600	9 300	5 200	2 400	-	
	710 mm		18 100	14 700	10 800	6 100	2 800	-	
	800 mm		21 000	17 100	12 600	7 100	3 200	-	
	1000 mm		27 500	22 400	16 500	9 300	4 200	-	
BT for other ØD (mm)	N.m		BT = BF (D/2000 - 0.077)						
Opening pressure:	minimum bars		175	135	110	65	40		
	maximum bars		195	155	130	85	60		
Total volume of oil displaced	cm ³		40 for one stroke disc/lining of 3mm						

* EF31: high energy braking, disc temperature during one braking ≤ 600°C
Other application, consult us.

** For higher speed, consult us.

Due to continuous development and improvement, all dimensions and characteristics are subject to change without notice.

SIME-Stromag SAS

20 allée des Erables B.P. 40004 - 95911 ROISSY CDG CEDEX FRANCE
Tel.: +33 (0)1.49.90.32.20 - Fax: +33 (0)1.49.89.06.38 - Email: sales@sime-stromag.com



09/00

3865RV